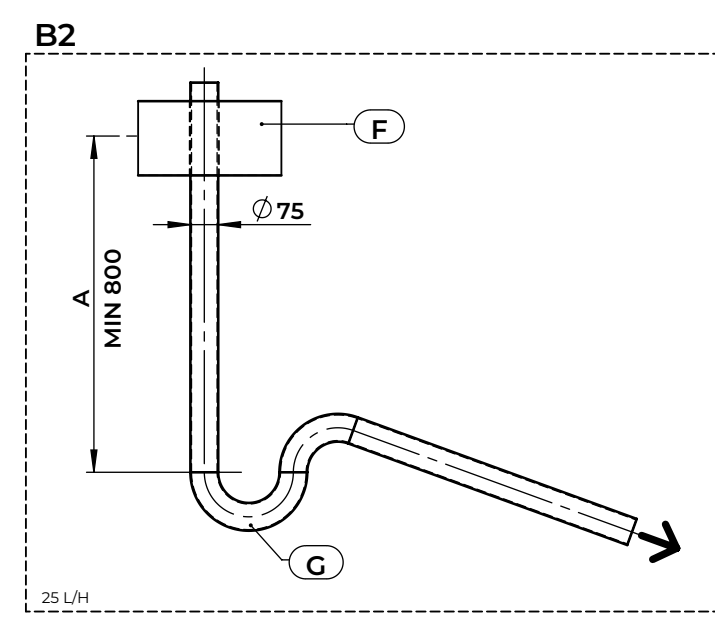
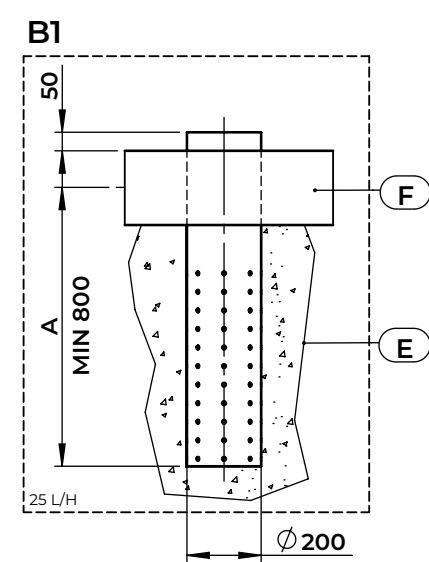
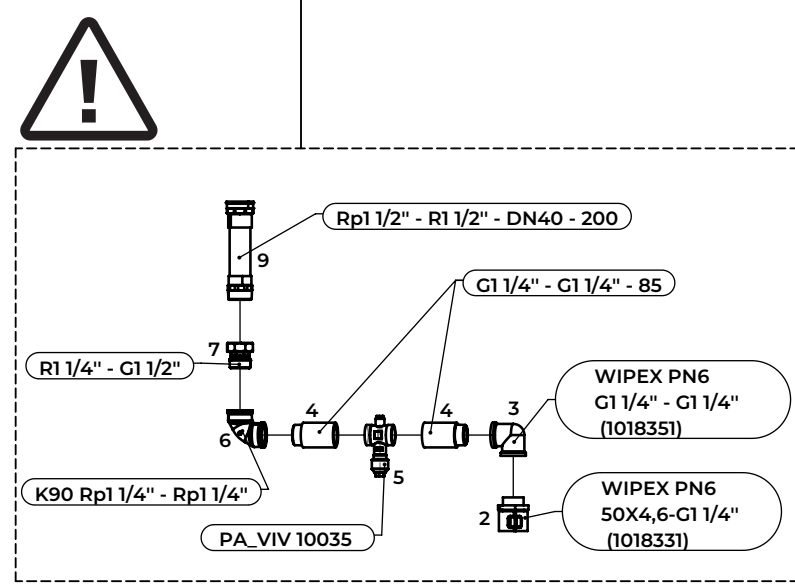
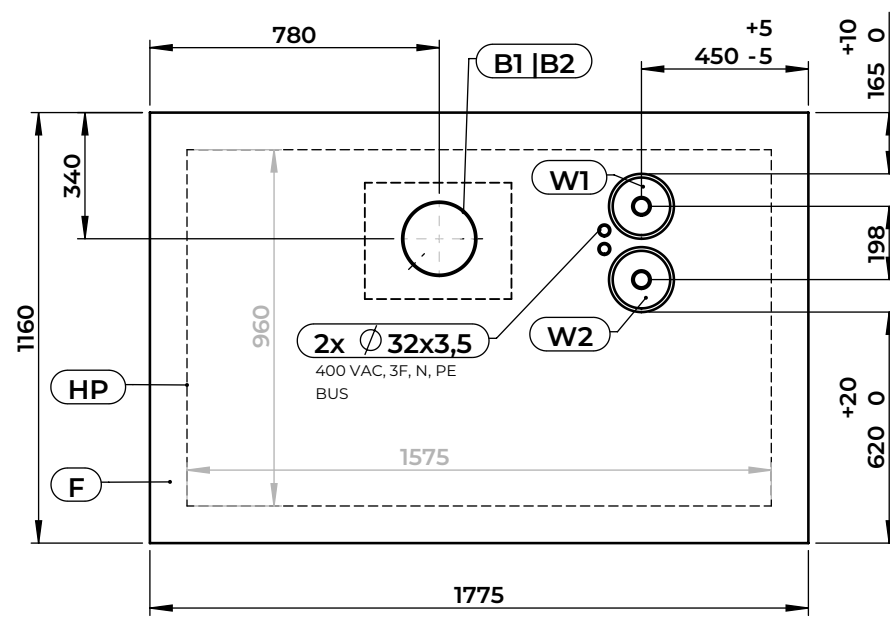
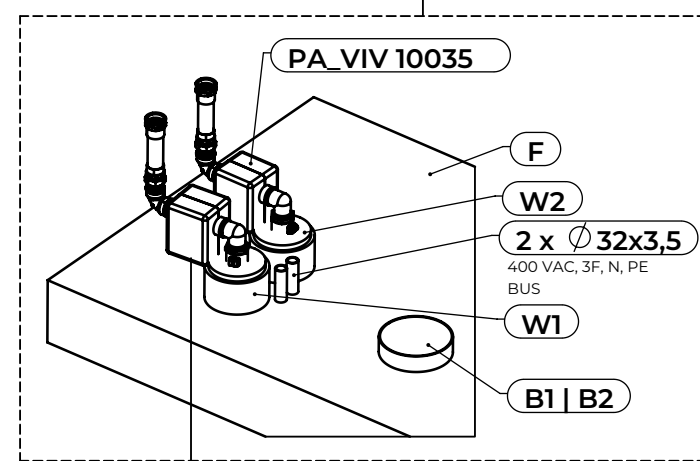
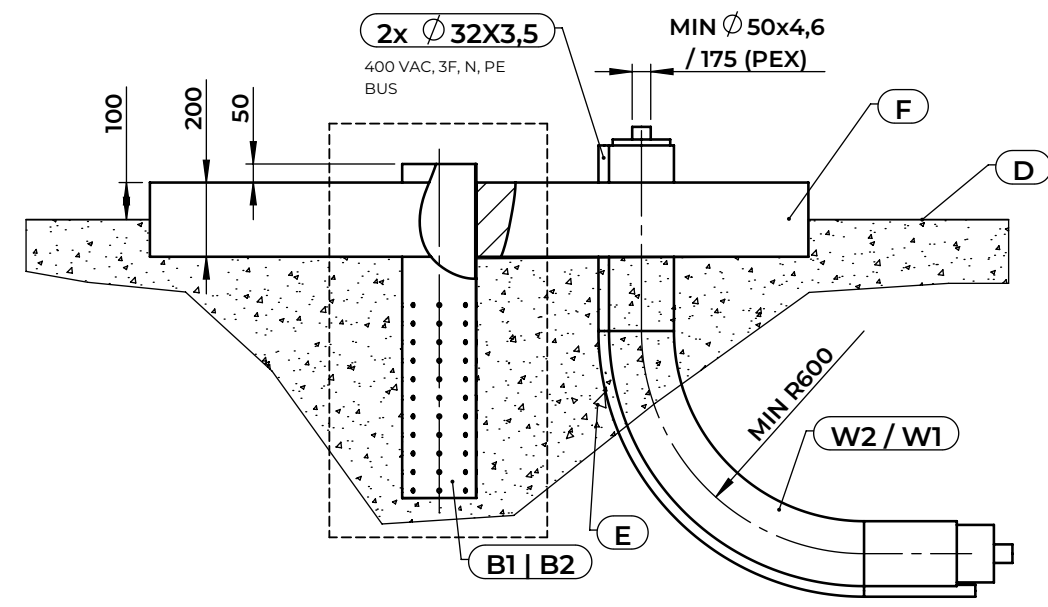
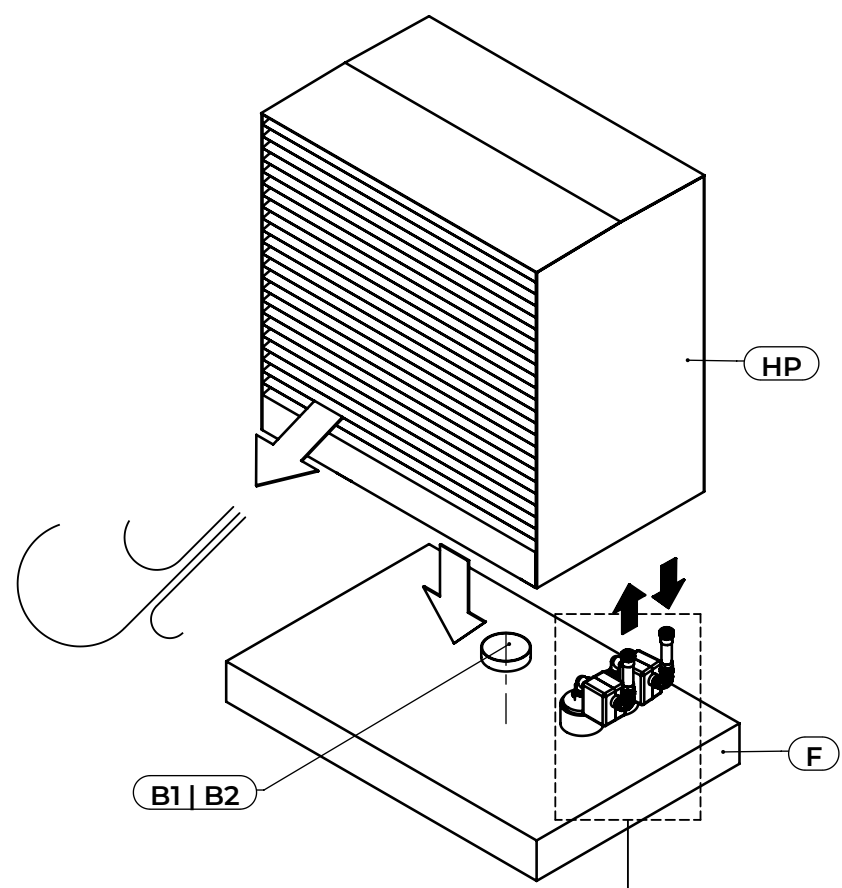


Check for tightness.  
Insulate pipes and connections  
with 19 mm thick vapor barrier insulation.



# AirCalor-K-35-I-HT

DE

TPZ\_AF-AM10035

A	TIEFENFROST
B1	GELOCHTES ABLAUFROHR
B2	ABFLUSSROHR
D	GELÄDENIVEAU
E	VERDICTETER BODEN - WASSERDURCHLÄSSIG
F	STAHLBETONFUNDAMENT
G	SIPHON
HP	WÄRMEPUMPE
W1	AUSTRITT
W2	EINTRITT

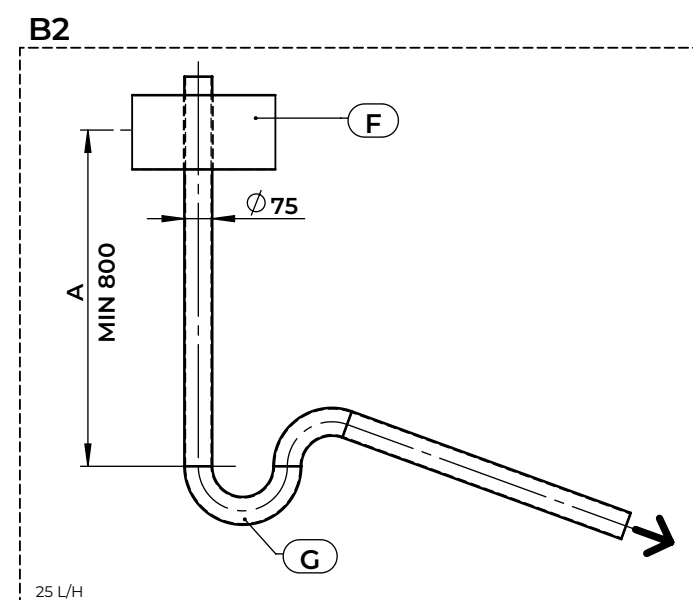
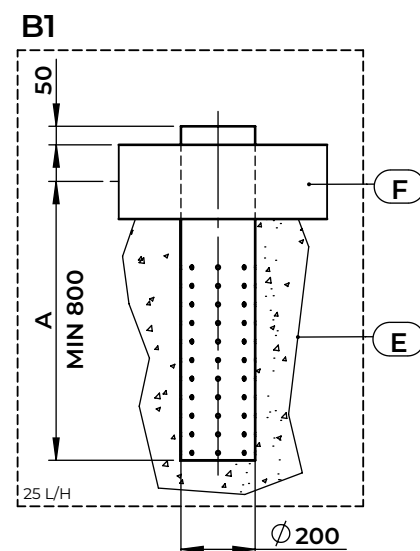
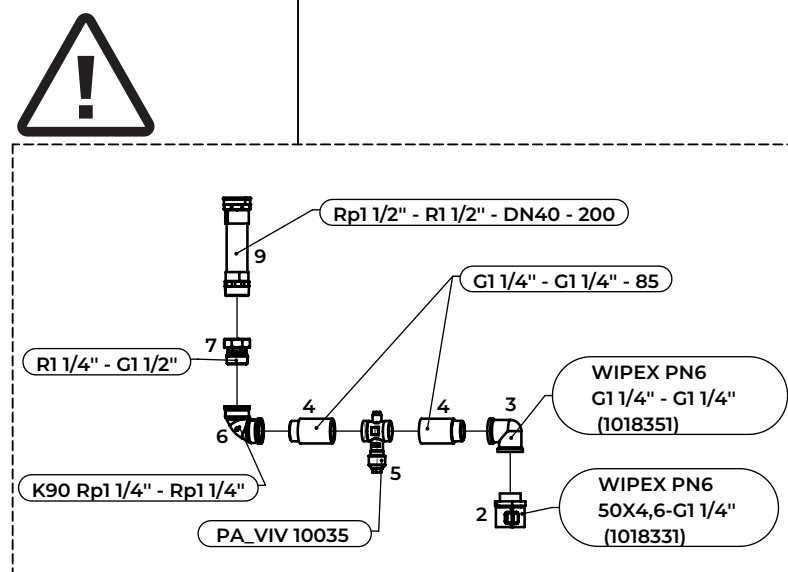
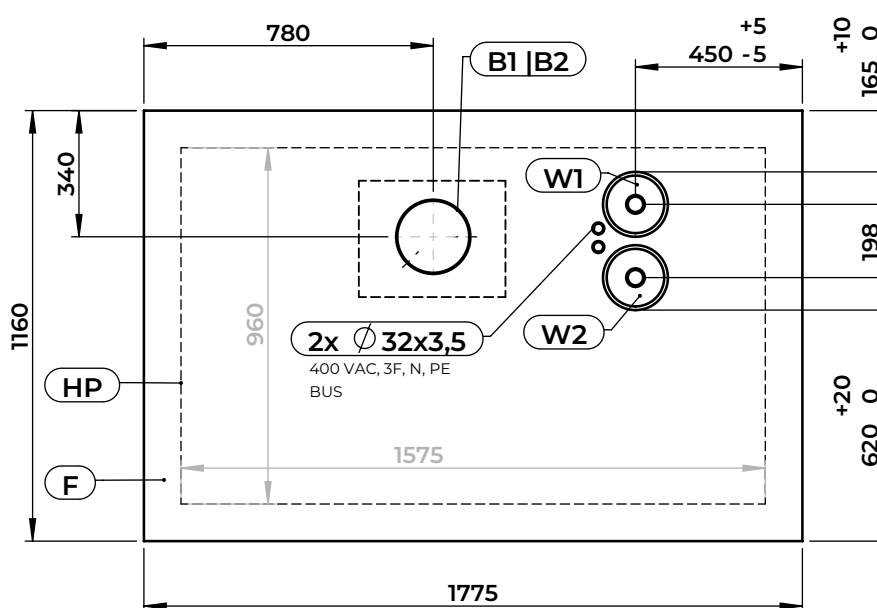
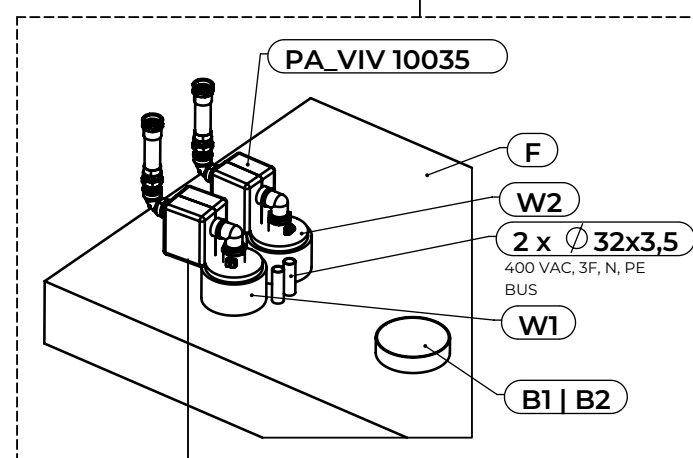
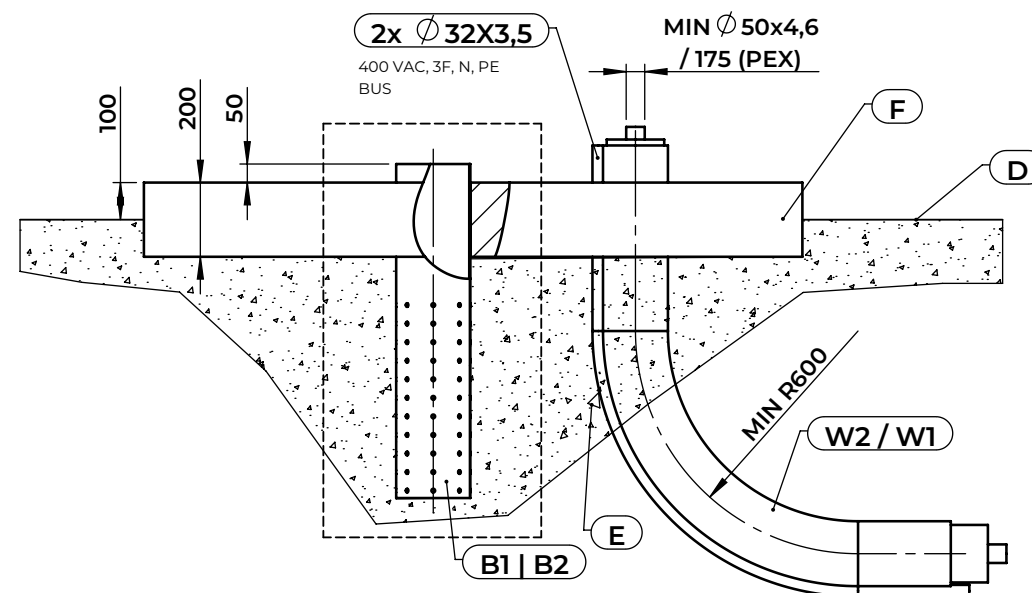
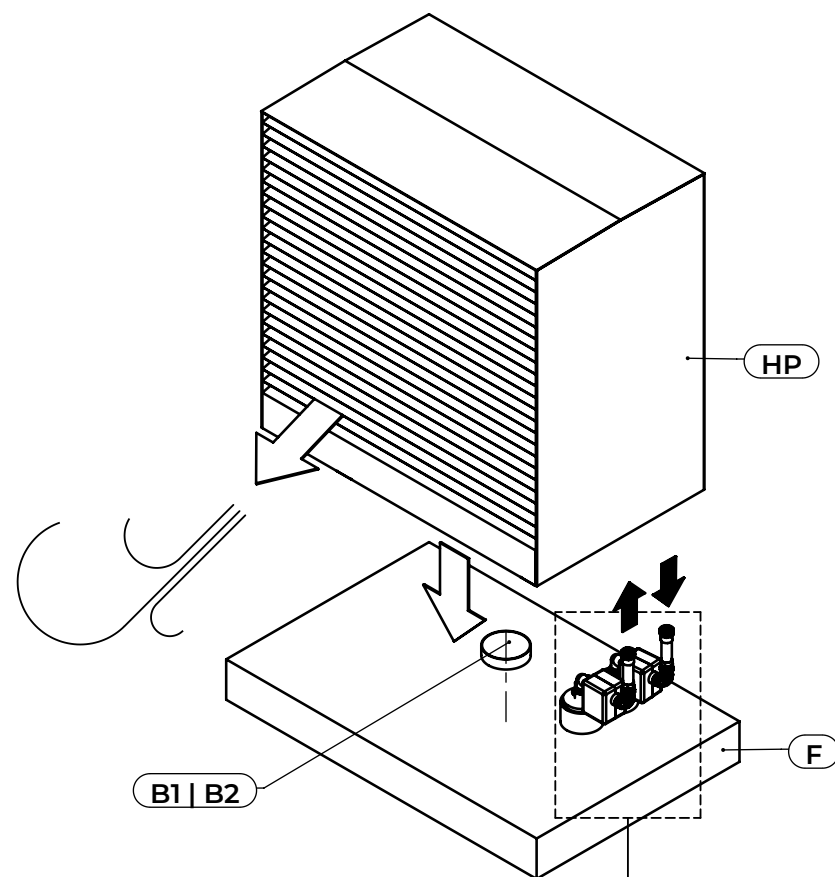


Auf Dichtigkeit prüfen.  
Isolieren Sie Rohre und Verbindungen mit einer 19 mm starken Dampfsperren-Isolierung.

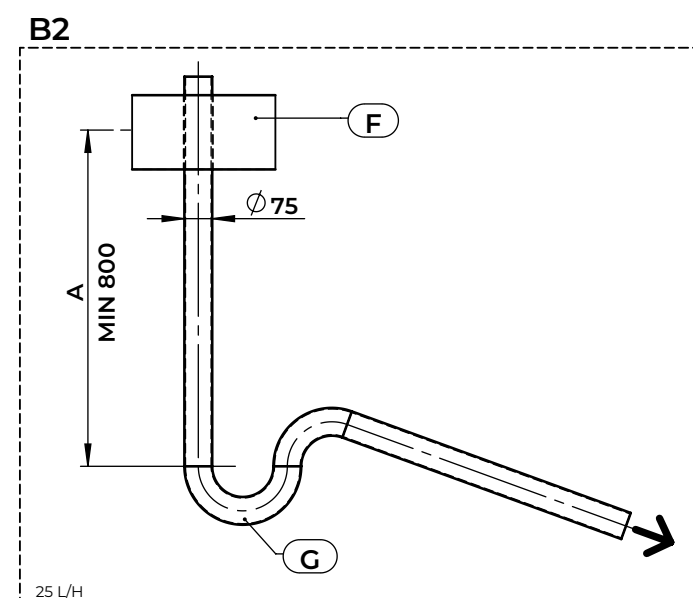
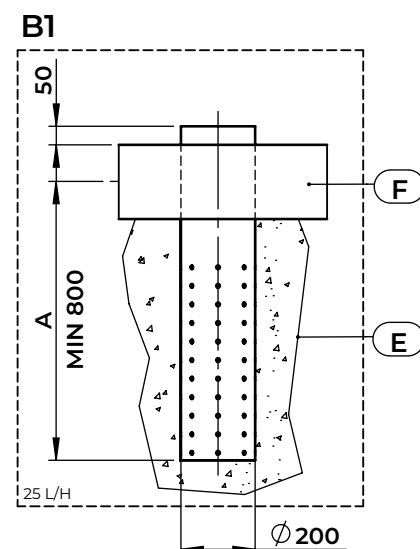
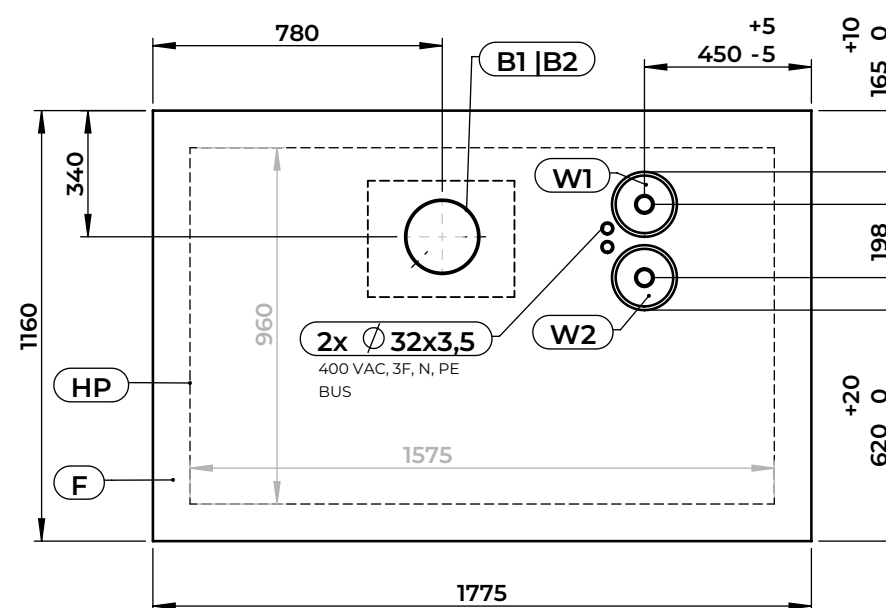
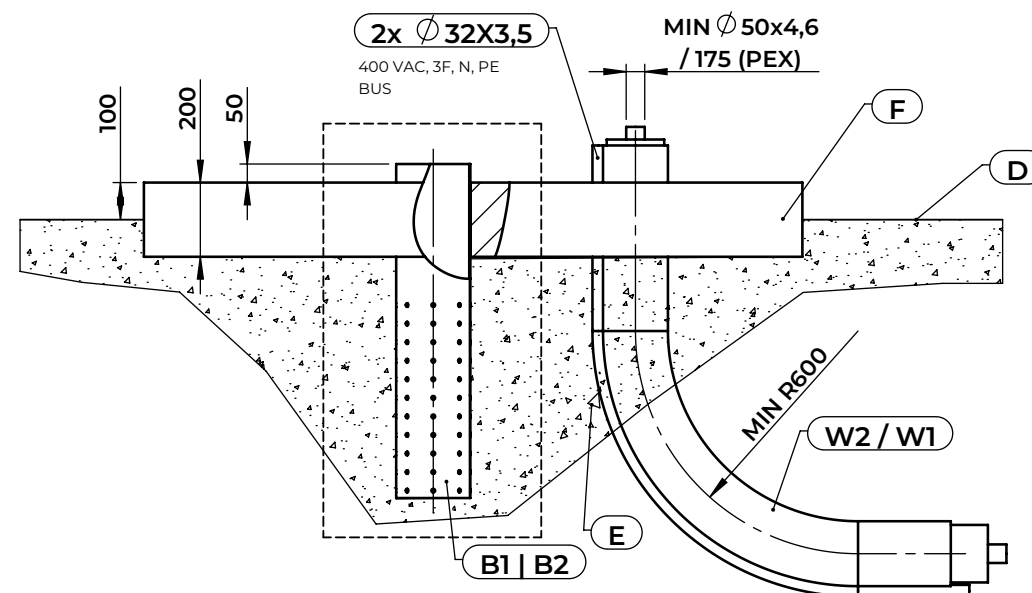
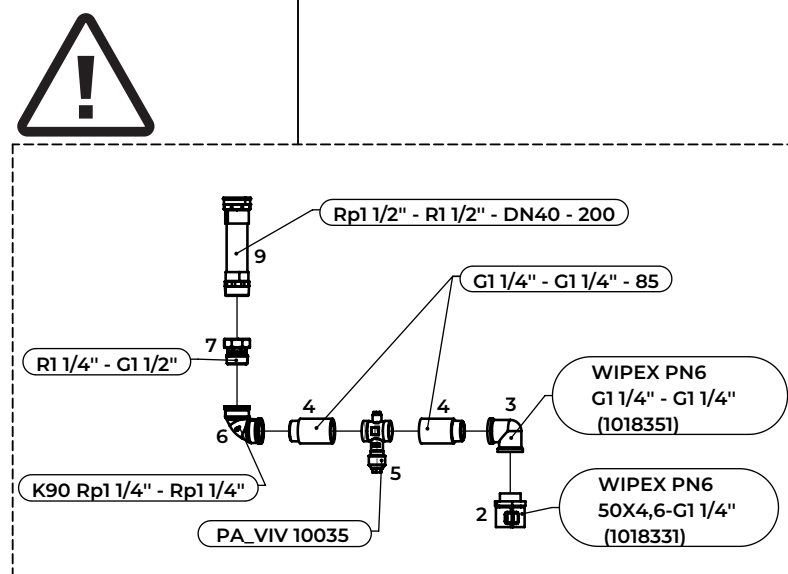
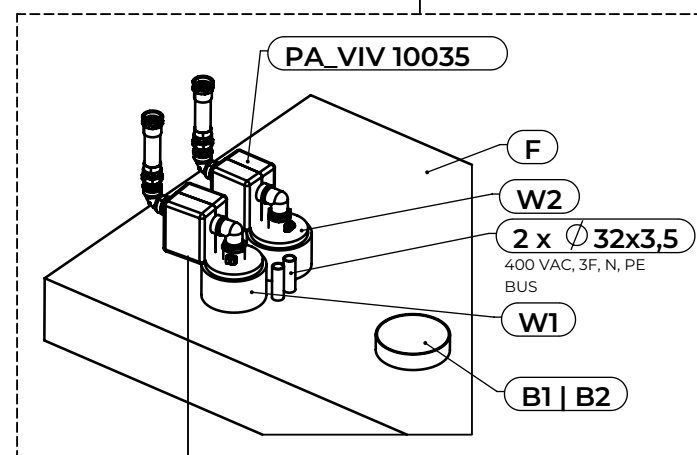
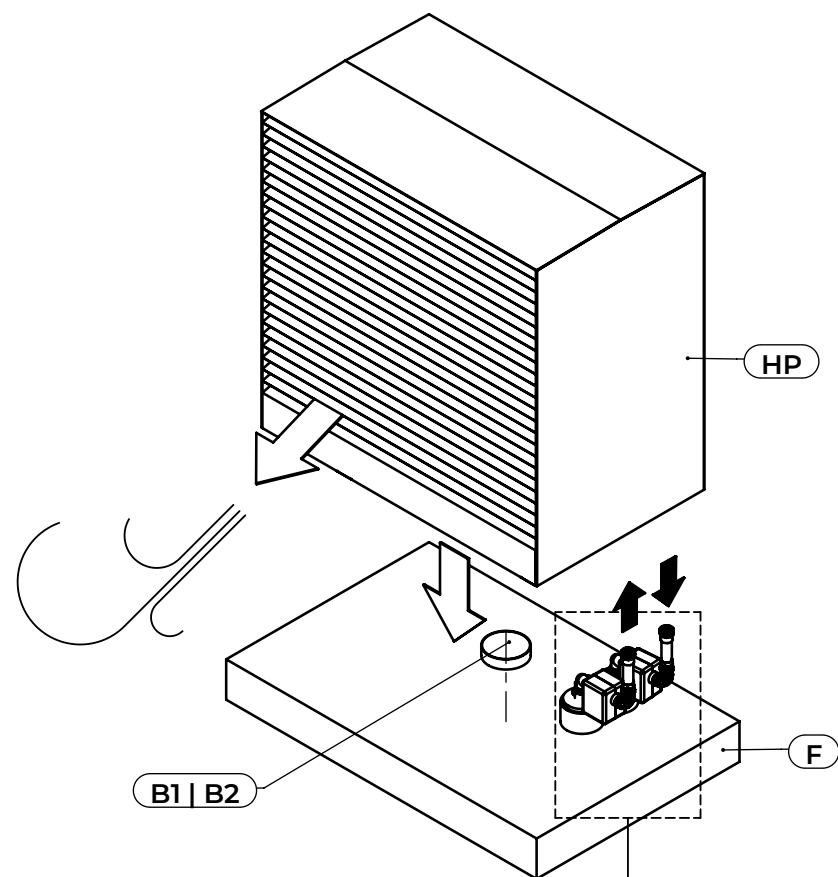
# AirCalor-K-35-I-HT

TPZ\_AF-AM10035

A	PROFONDITÀ DI GELO
B1	TUBO DI DRENAGGIO PERFORATO
B2	TUBO DI SCARICO DEL DRENAGGIO
D	LIVELLO DEL PAVIMENTO
E	TERRENO COMPATTATO - PERMEABILE ALL'ACQUA
F	BASAMENTO IN CEMENTO ARMATO
G	SIFONE
HP	POMPA DI CALORE
W1	MANDATA
W2	RITORNO



Verificare la tenuta.  
Isolare i tubi e i raccordi con isolamento  
a cellule chiuse da 19 mm.



# AirCalor-K-35-I-HT

TPZ\_AF-AM10035

A	PROFONDEUR DE GEL
B1	TUYAU DE DRAINAGE PERFORÉ
B2	TUYAU D'ÉVACUATION DES EAUX DE DRAINAGE
D	NIVEAU DU SOL
E	SOL COMPACTÉ-PERMÉABLE À L'EAU
F	FONDATION EN BÉTON ARMÉ
G	SIPHON
HP	POMPE À CHALEUR
W1	SORTIE
W2	ENTRÉE



Vérifiez l'étanchéité.  
Isoler les tuyaux et les raccords avec  
isolation pare-vapeur de 19 mm d'épaisseur.